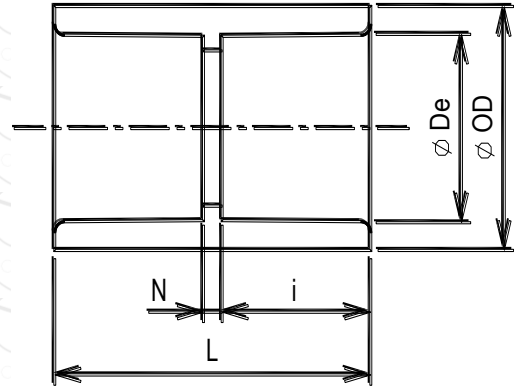


# D.P.S. ASTM D2467 PVC SCH80 FITTINGS

## COUPLING (Soc\*Soc) 平接頭

Size	De	i	OD	L	N
1/2"	21.34	24.5	32.8	52.4	3.4
3/4"	26.67	27.8	38.2	60.3	4.7
1"	33.40	31	46.2	65.2	3.2
1-1/2"	48.26	38.4	63.2	80.2	3.4
2"	60.32	41.8	75.2	88.3	4.7
2-1/2"	73.02	44.8	88.0	96.0	6.4
3"	88.90	50.4	105.2	109.2	8.4
4"	114.30	60.2	132.6	126.6	6.2
6"	168.28	76.5	192.2	161.5	8.5
8"	219.08	102	247.0	211	7.0

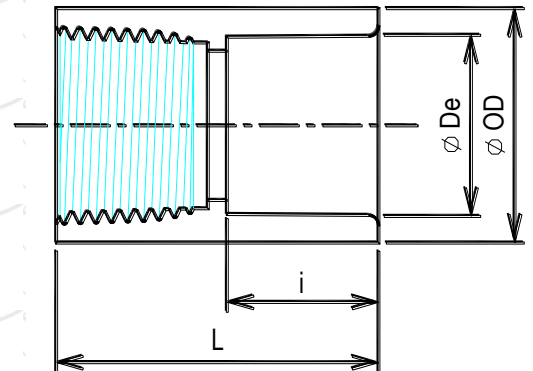
Unit: mm



## FEMALE ADAPTER (Soc\*Fipt) 內牙接頭

Size	De	i	OD	L
1/2"	21.34	24.5	32.8	52.4
3/4"	26.67	27.8	38.2	60.3
1"	33.40	31	46.2	65.2
1-1/2"	48.26	38.4	63.2	80.2
2"	60.32	41.8	75.2	88.3

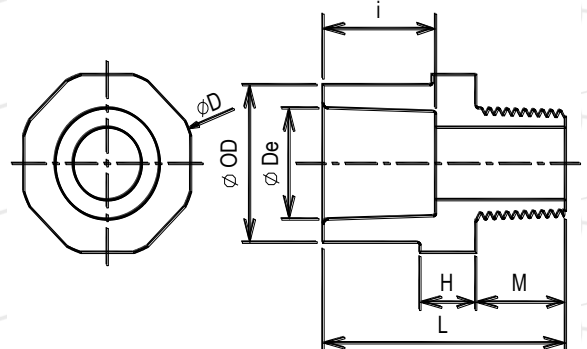
Unit: mm



## MALE ADAPTER (Soc\*Mipt) 外牙接頭

Size	De	i	OD	L	M	H	D
1/2"	21.34	24.2	30	50	19	9	38.5
3/4"	26.67	27.2	35	49.5	14.5	9	43.3
1"	33.40	30.4	46	58.6	20.5	9.2	54

Unit: mm

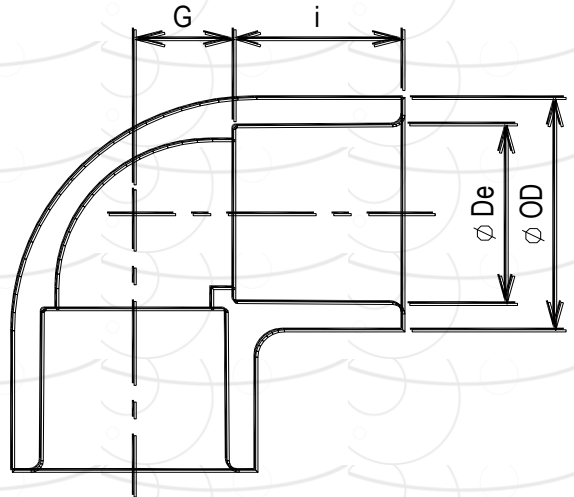


## D.P.S. ASTM D2467 PVC SCH 80 FITTINGS

90° ELBOW (Soc\*Soc) 90°彎頭

Size	De	i	OD	G
1/2"	21.34	24.5	32.8	14.5
3/4"	26.67	27.5	38.2	16
1"	33.40	31	46	18.5
1-1/2"	48.26	38	63.2	28
2"	60.32	41.8	73.2	33.2
2-1/2"	73.02	44.5	88.1	39.5
3"	88.90	50.4	105.2	50.1
4"	114.30	60.2	132.6	59.0
6"	168.28	76.5	192.2	93.4
8"	219.08	102	247.0	120.1

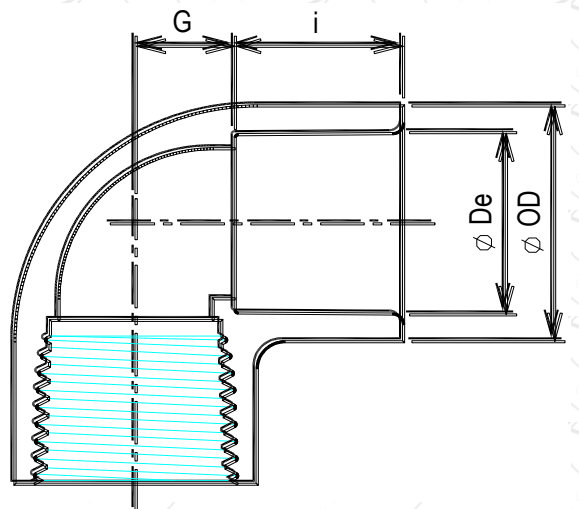
Unit: mm



90° ELBOW (Soc\*Fipt) 龍口彎

Size	De	i	OD	G
1/2"	21.34	24.5	32.8	14.5
3/4"	26.67	27.5	38.2	16
1"	33.40	31	46	18.5
1-1/2"	48.26	38	63.2	28

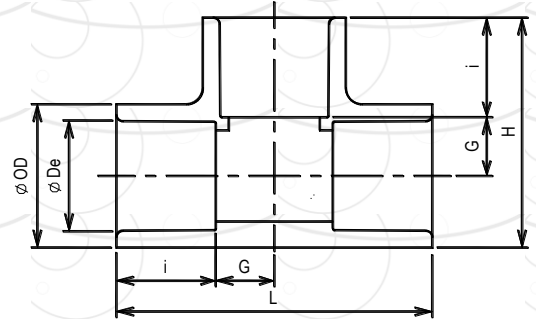
Unit: mm



**D.P.S. ASTM D2467 PVC SCH 80 FITTINGS**
**TEE (Soc\*Soc\*Soc) 正三通**

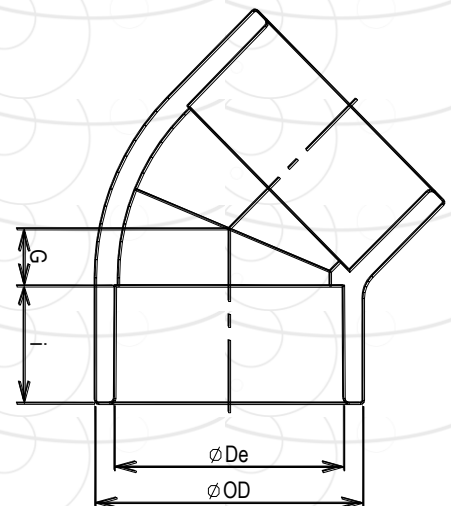
Size	De	i	OD	L	G	H
1/2"	21.34	24.5	29.2	74.8	12.9	52
3/4"	26.67	27.5	35.2	84.8	14.9	60
1"	33.40	31	44.2	97.6	17.8	70.9
1-1/2"	48.26	38.4	60.2	128	25.6	94.1
2"	60.32	41.3	73	146	31.7	109.5
2-1/2"	73.02	45	89	174	42	131.5
3"	88.90	47.9	105.4	198	50.8	152
4"	114.30	57.5	133	242	63.2	188
6"	168.28	76.5	192.2	345	96.0	268.6
8"	219.08	102	247.0	446	121.0	346.5

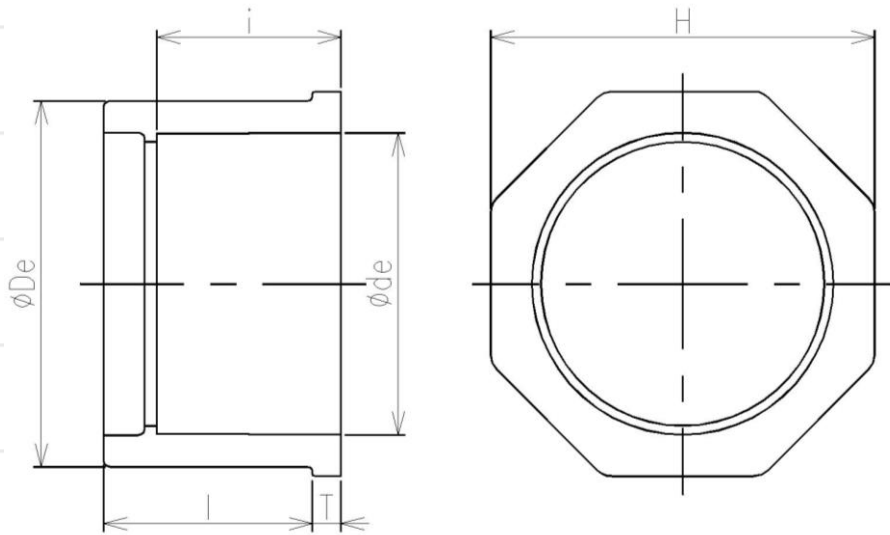
Unit: mm


**45° ELBOW (Soc\*Soc) 45°彎頭**

Size	De	i	OD	G
1/2"	21.34	22.5	29.5	6.7
3/4"	26.67	25.7	35.3	8.3
1"	33.40	28.9	43.5	9.1
1-1/2"	48.26	35.2	59.7	13.0
2"	60.32	38.4	72.7	17.1
2-1/2"	73.02	44.8	88.5	19.2
3"	88.90	47.9	105	22.3
4"	114.30	57.5	134	28
6"	168.28	76.5	192.6	44
8"	219.08	102	247	51.5

Unit: mm



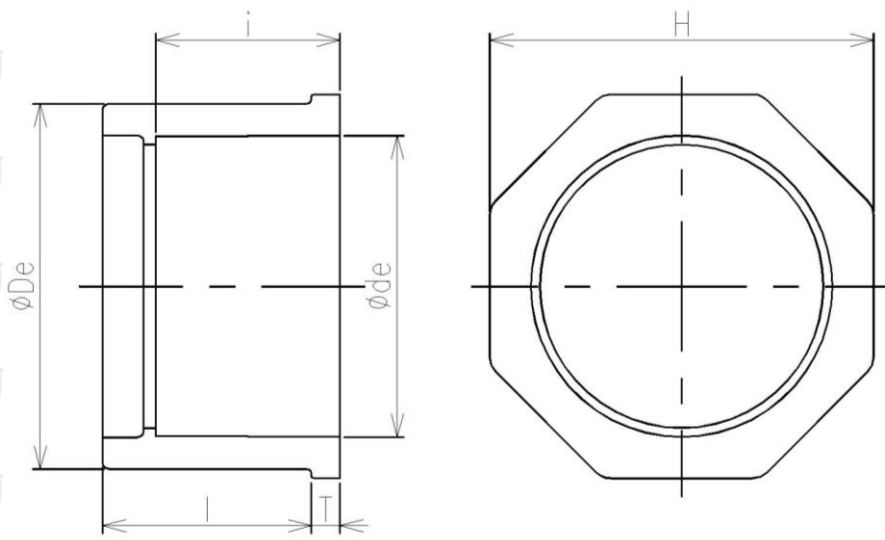
**D.P.S.    ASTM D2467    PVC    SCH 80    FITTINGS**

**REDUCING BUSHING (Spigot\*Soc) 卜申**

Size	De	l	de	i	T	H
3/4" X 1/2"	26.67	25.5	21.34	22.5	5	30
1" X 1/2"	33.40	29.0	21.34	22.5	5	37
1" X 3/4"	33.40	29.0	26.67	25.5	5	37
1-1/4" X 1/2"	42.16	32.0	21.34	22.5	6	46
1-1/4" X 3/4"	42.16	32.0	26.67	25.5	6	46
1-1/4" X 1"	42.16	32.0	33.40	29.0	6	46
1-1/2" X 1/2"	48.26	35.0	21.34	22.5	6	53
1-1/2" X 3/4"	48.26	35.0	26.67	25.5	6	53
1-1/2" X 1"	48.26	35.0	33.40	29.0	6	53
1-1/2" X 1-1/4"	48.26	35.0	42.16	32.0	6	53
2" X 1/2"	60.32	38.5	21.34	22.5	6	63.8
2" X 3/4"	60.32	38.5	26.67	25.5	6	63.8
2" X 1"	60.32	38.5	33.40	29.0	6	63.8
2" X 1-1/4"	60.32	38.5	42.16	32.0	6	63.8
2" X 1-1/2"	60.32	38.5	48.26	35.0	6	63.8
2-1/2" X 1-1/2"	73.02	44.5	48.26	35.0	7	76.3
2-1/2" X 2"	73.02	44.5	60.32	38.5	7	76.3

Unit: mm



**D.P.S. ASTM D2467 PVC SCH 80 FITTINGS**



**REDUCING BUSHING (Spigot\*Soc) 卜申**

Size	De	l	de	i	T	H
3" X 1"	88.90	48.0	33.40	29.0	7	93.5
3" X 1-1/2"	88.90	48.0	48.26	35.0	7	93.5
3" X 2"	88.90	48.0	60.32	38.5	7	93.5
3" X 2-1/2"	88.90	48.0	73.02	44.5	7	93.5
4" X 2"	114.30	58.0	60.32	38.5	8	117.5
4" X 2-1/2"	114.30	58.0	73.02	44.5	8	117.5
4" X 3"	114.30	58.0	88.90	48.0	8	117.5
6" X 2"	168.28	77.0	60.32	38.5	12	175
6" X 3"	168.28	77.0	88.90	48.0	12	175
6" X 4"	168.28	77.0	114.30	58.0	12	175
8" X 4"	219.08	102.0	114.30	58.0	18	230
8" X 6"	219.08	102.0	168.28	77.0	18	230

Unit: mm



**SUPERTUNG**  
丞晟實業有限公司

# D.P.S. PVC & CPVC UNION 由任

## ANSI / DIN / JIS / CNS

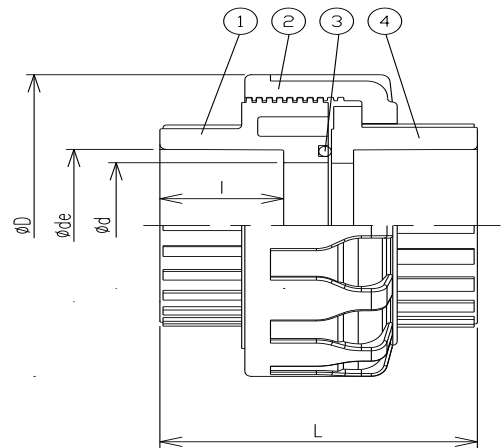
### UNION 由任

#### DATA

- Working pressure : 150PSI / 73°F
- Easy maintenance
- All-plastic construction



NO	PARTS NAME	Q'TY	MATERIAL
1	BODY	1	PVC, CPVC
2	NUT	1	PVC, CPVC
3	O-RING	1	EPDM, FPM
4	CONNECTOR	1	PVC, CPVC



SIZE	D	L	ANSI		DIN		JIS		CNS		NPT	BSPT	BSPF	d
			ø de	l	ø de	l	ø de	l	ø de	l				
1/2" (15mm)	46	55	21.34	22.5	20	20	22	22.5	22	22.5	14	14	14	13
3/4" (20mm)	56	62	26.67	25.7	25	23	26	25.7	26	25.7	14	14	14	19
1" (25mm)	66	67	33.4	28.9	32	26	32	28.9	34	28.9	11.5	11	11	25
1-1/4" (32mm)	82	79	42.16	33.8	40	31	38	33.8	42	33.8	11.5	11	11	31
1-1/2" (40mm)	98	82	48.26	35	50	34	48	35	48	35	11.5	11	11	40
2" (50mm)	120	99	60.32	38.5	63	38.5	60	38.5	60	38.5	11.5	11	11	50
2-1/2" (65mm)	120	98	73.02	41.5	75	41.5	76	41.5	76	41.5	8	11	11	61
3" (80mm)	162	119	88.9	48	90	51	89	51	89	51	8	11	11	75
4" (100mm)	220	142	114.3	57.5	110	61	114	61	114	61	8	11	11	100

Unit: mm